


FL-22F

General Purpose Relay

 _{us} E173485
28×21.5×35



- 2 to 3 pole configurations
- Conform to RoHS,ELV directive

COIL DATA at 20°C

Coil Power 0.9W

Nominal Voltage (VDC)	Rated Current (mA)	Max Operate Voltage (VDC)	Min Release Voltage (VDC)	Coil Resistance ($\Omega \pm 10\%$)
5	178.5	3.75	0.5	28
6	150	4.5	0.6	40
12	75	9	1.2	160
24	37.5	18	2.4	640
48	18.75	36	4.8	2560
110/120	10	82.5	11	11000

Coil Power 1.2VA

Nominal Voltage (VAC)	Max Operate Voltage (VAC)	Min Release Voltage (VAC)	Coil Resistance ($\Omega \pm 10\%$)
6	4.8	1.2	11.5
12	9.6	2.4	46
24	19.2	4.8	180
48	38.4	9.6	735
110/120	96	22	4550
220/240	176	44	14400

- 5-24VDC/6-48VAC Coil Resistance Tolerance $\pm 10\%$,
- 48-110VDC/110-240VAC Coil Resistance Tolerance $\pm 15\%$.

CONTACT DATA

Contact Form	2Z/3Z
Contact Material	Silver Alloy
Load	Resistive load(COS $\Phi=1$)
Contact Ratings	7A 240VAC 7A 30VDC
Minimum load	100mA 5VDC
Max Switching Voltage	240VAC/30VDC
Max Switching Current	7A
Max Switching Power	1680VA/210W
Contact Resistance	100m Ω Max at 6VDC 1A
Electrical	100, 000 Operations(at30Operations/minute)
Mechanical	10, 000, 000 Operations(at300Operations/minute)

CHARACTERISTICS DATA

Insulation Resistance	100M Ω Min at 500VDC
Between Open Contacts	1000VAC(for one minute)
Between Contacts and Coil	1500VAC(for one minute)
Operate Time	25ms
Release Time	25ms
Shock Resistance	-40°C to +70°C
Vibration Resistance	Operating Extremes: 20G
	Damage Limits: 100G
Max. switching frequency	10-55Hz, 1.5mm
Humidity	Mechanical: 18,000operations/hr Electrical: 1,800operations/hr
Weight	40-85%
Shock Resistance	Approx 35g

APPROVED STANDARDS

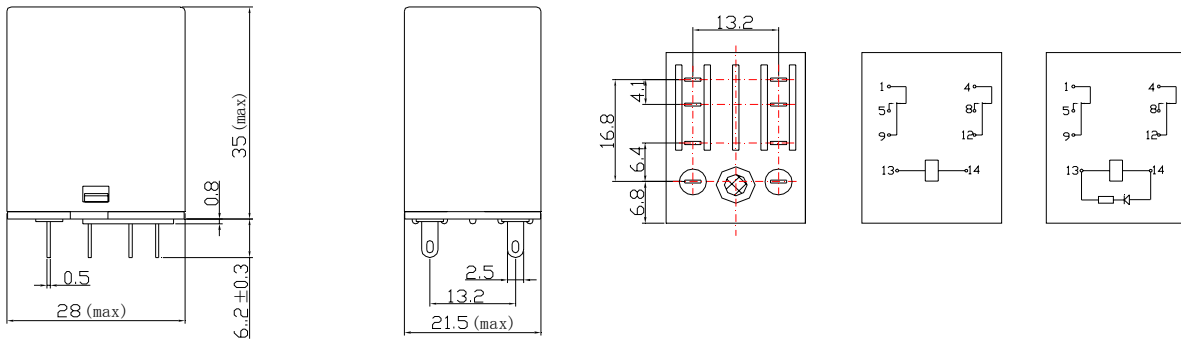
UL & cUL	7A 240VAC 7A 30VDC
----------	-----------------------

OPDERING CODE

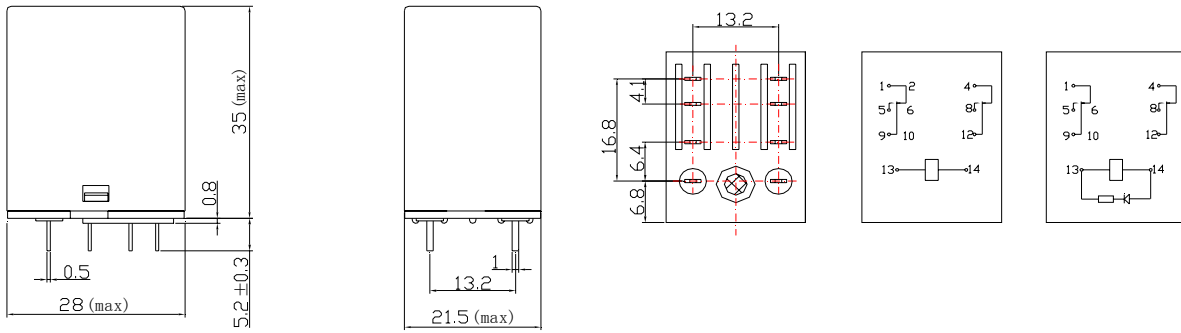
FL-22F	—	2Z	(P)	—	F	—	D	/	12VDC
1	2	3	4	5	6				
1. Relay Model									
2. Contact Form									
2Z: Form 2C									
3Z: Form 3C									
3. P:PCBType									
Nil: B Type									
4. With Flange for 38mm pitch hole									
5. With LED									
6. Coil Nominal Voltage									
5,6,12,24,48,110VDC									
6,12,24,48,110,120,220/240VAC									



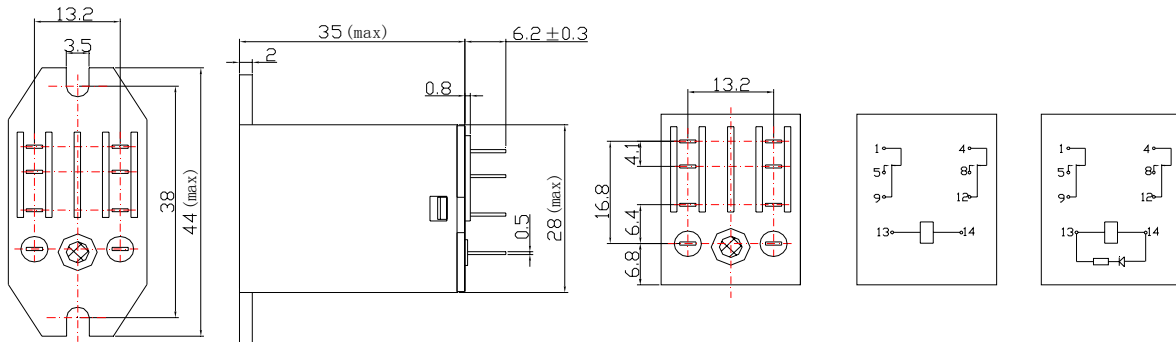
OUTLINE DIMENSIONS, WIRING DIAGRAM AND LAYOUT



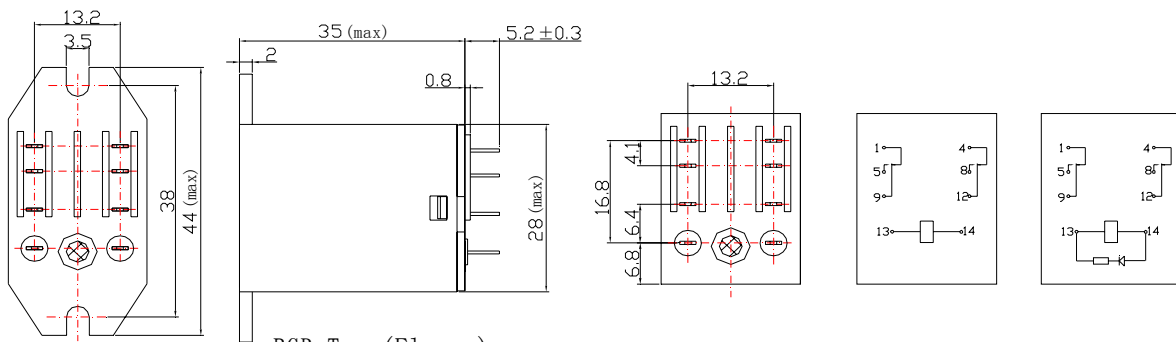
B Type



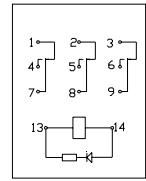
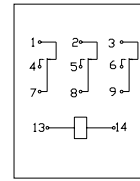
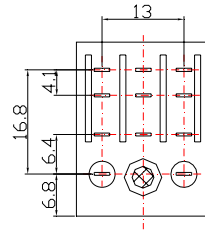
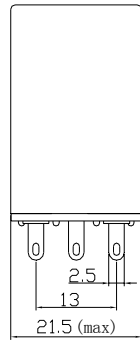
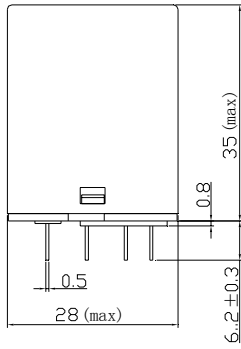
PCB Type



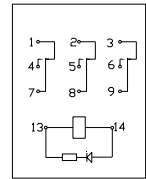
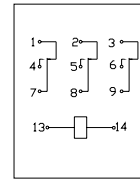
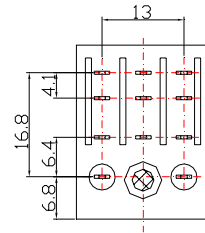
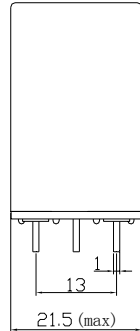
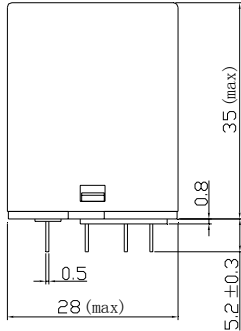
B Type (Flange)



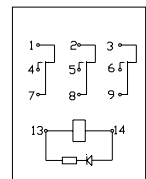
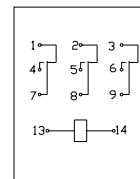
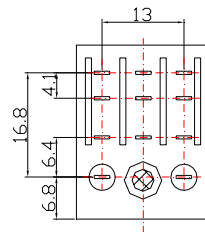
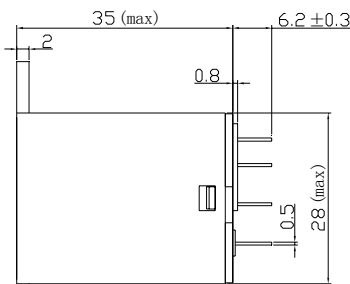
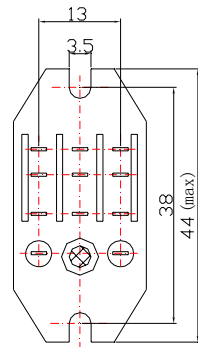
PCB Type (Flange)



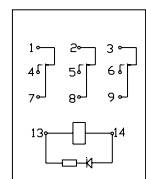
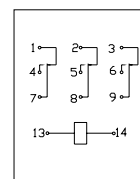
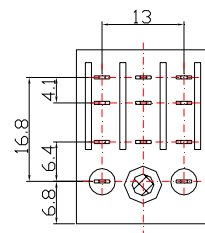
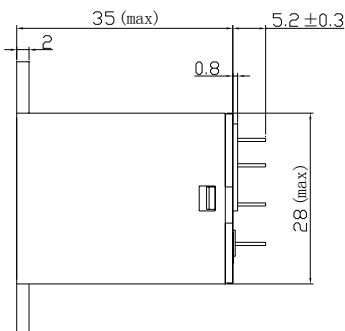
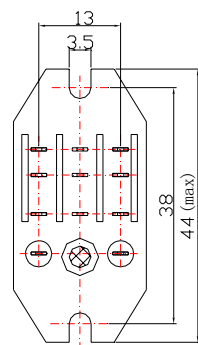
B Type



PCB Type



B Type (Flange)



PCB Type (Flange)

